



Enabling greater spatial knowledge

Geospatial information services

Our experience and understanding of how to create, manage and deliver spatial information on a local and national scale means we can support better decision making through greater spatial knowledge.

Whether planning, designing, responding to or organising day-to-day operations, knowing 'where' something is, was or will be, and how to communicate that knowledge, is at the heart of effective decision making.

We contribute to that using geographical information systems (GIS) and geographical information science, a technology and technical discipline that support the use and sharing of spatial information. We provide expert consultancy and technical delivery of GIS-based solutions, including large multi-disciplinary studies, to clients who need to know about 'where'.

Our services

Halcrow offers end-to-end solutions in the capture, use and sharing of geospatial information. With in-house topographic and hydrographic survey, asset inspection, deformation monitoring and terrestrial laser scanning capabilities, plus the experience to specify, commission and manage other forms of data acquisition, we can provide almost any form of geospatial data.

GIS organise, manage and interpret this data to provide meaningful information, which can take many forms, including:

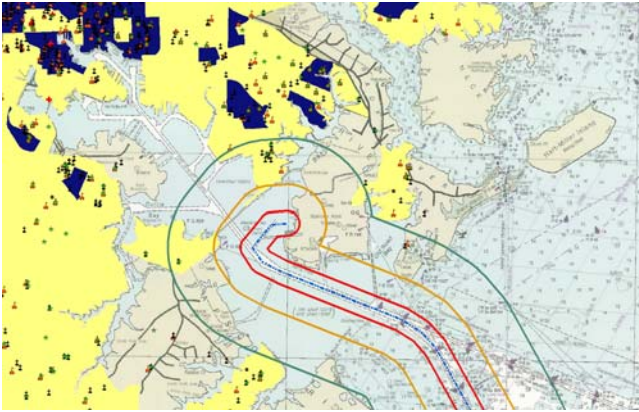
- web maps, sites and portals
- interactive DVDs
- mobile data services
- digital geo-databases
- interpretive reports
- geo-statistical analysis
- cartographic output

Spatial data infrastructure

We know that GIS are often a fundamental part of the spatial data infrastructure (SDI) used to provide geospatial information services within or between organisations, or between organisations and the public. Other elements of an SDI include its procedures and protocols, the people using and supporting it, and the data and metadata associated with it.

Halcrow's experience in data specification, system design and implementation, training and knowledge transfer allows us to consider our client's SDI as a whole, even if we are just working on one component.

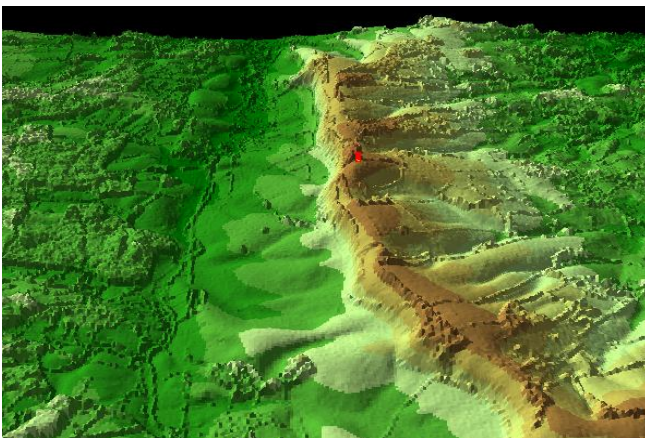
This means that the business needs of our clients are at the heart of the innovative and sustainable solutions we provide, from feasibility study and strategy development through to detailed system design, data analysis and software development.



Constraint and opportunity mapping, USA



Watershed information shared via the internet, Argentina



Terrain modelling for inter-visibility analysis, UK

Worldwide experience

Halcrow's specialist GIS team has been delivering projects around the world since 1989, including:

■ National Coast Erosion Risk Mapping, UK

Interactive modelling and mapping via a web portal.

■ Black Sea bio-diversity study, Georgia

Institutional strengthening and technology transfer.

■ South coast sustainable development study, Jamaica

Spatial analysis, data and metadata design, system implementation and training.

■ Sectoral management plan, Buenos Aires, Argentina

GIS strategy development to support institutional strengthening.

■ West coast expressway, Malaysia

Prefeasibility study and implementation to support highway design and operation.

■ Area development plan, Barbados

GIS strategy development and national geodatabase implementation.

■ National property dataset, UK

Design and maintenance of a key national database to support national risk assessments and strategic local planning.

■ Doha coastal management study, Qatar

Extension of existing national data model to support coastal zone management.

Contact us

- **Rob Deakin** – Swindon, UK
tel +44 (0)1793 812479
email deakinr@halcrow.com
- **Gary Ostroff** – New York, USA
tel +00 1 212 608 3990
email ostroffgm@halcrow.com
- **Sophia Pasman** – Buenos Aires, Argentina
tel +00 54 11 4311 4911
email pasmans@halcrow.com
- **Neil Gyte** – Dubai, UAE
tel +00 97150 65 33 698
email gytenj@halcrow.com

For your nearest Halcrow office, visit halcrow.com