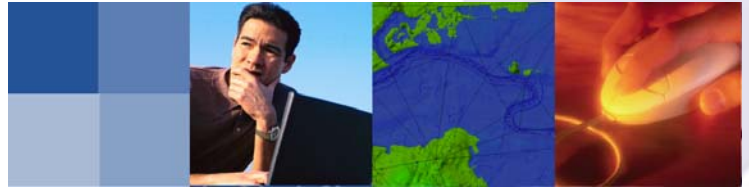


# MDSF

*Providing a unified approach to evaluating economic and social impacts of flooding*



The Modelling and Decision Support Framework, developed by Halcrow's in-house technical software development team for DEFRA and the Environment Agency, is providing a common framework for evaluating both economic and social impacts of flood management strategies. It has been used on variety of projects including Catchment Flood Management Plans (CFMPs), Strategies and Shoreline Management Plans (SMPs) both by Halcrow staff and by other organisations.

The development team now provide ongoing support and training on the MDSF software to the Environment Agency and their appointed consultants.

In addition our team built and maintains the MDSF website providing support, training, downloads and discussion forums to MDSF users. You can find the site at [www.mdsf.co.uk](http://www.mdsf.co.uk).

## MDSF provides strong links to other software including:

- ISIS
- DeltaMapper
- ArcView
- Microsoft Office

## Recent projects using MDSF have included:

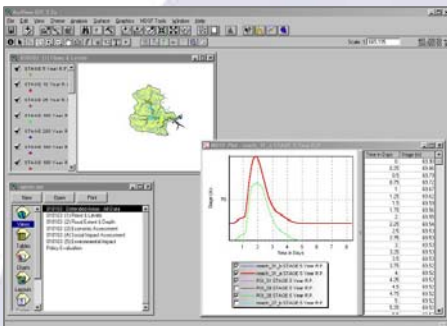
- Nene CFMP
- SMP2 Guidance
- Thames Embayments

## The MDSF provides tools to:

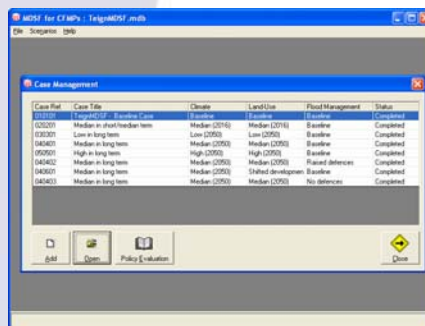
- Manage and view geographical and tabular data
- Import hydraulic models results
- Calculate flood extents and depths
- Calculate economic damages
- Calculate social impacts
- Compare results to assist the user in policy evaluation
- Estimate uncertainty in the results



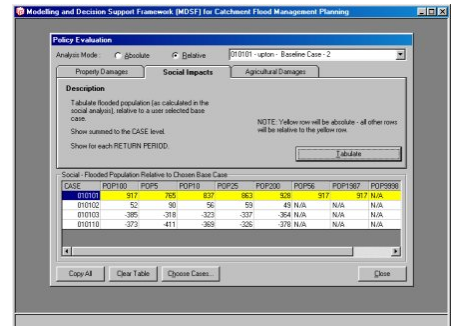
MDSF website homepage



Data management and time series viewer



Case management



Policy evaluation tools

MDSF is a flexible tool designed to support a wide variety of data input formats. Using a simple text format it is able to interface with many popular hydraulic modelling packages.

The built-in flood mapping tool provides quick and repeatable calculation of flood maps, ideal for catchment and strategy scale studies. Alternatively, externally generated depths can be imported and analysed by the economic and social impact evaluation tools.

As part of a HR Wallingford led consortium, Halcrow distributes, supports and maintains the MDSF software on behalf of the Environment Agency. If you would like to use MDSF on your project please contact us.

For further information about MDSF please visit [www.mdsf.co.uk](http://www.mdsf.co.uk) or contact: Neil Andrassy ([andrassy@halcrow.com](mailto:andrassy@halcrow.com)) or Jon Wicks ([wicks@halcrow.com](mailto:wicks@halcrow.com))



*Innovative software solutions for smarter working*

